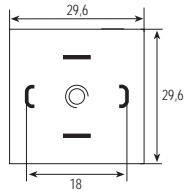


Valve plug

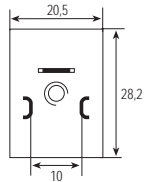
With open ended wires



Valve plug

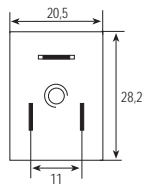
Form A (18 mm)

from 1.8.1



Valve plug

Form B (10 mm)

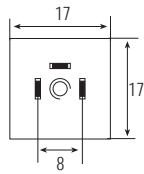


Valve plug

Form BI (11 mm)

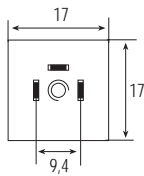
from 1.8.4

Valve plug



Valve plug

Form C (8 mm)



Valve plug

Form CI (9.4 mm)

from 1.8.8

Field-wireable



Valve plug

Form A (18 mm)
Form B (10 mm)
Form BI (11 mm)

from 1.8.12

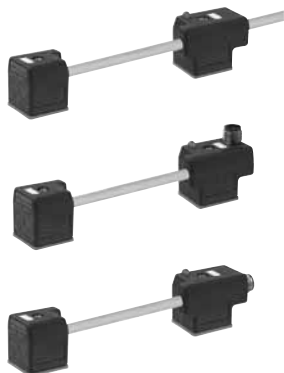


Valve plug

Isolation displacement technology
Form C (8 mm)

from 1.8.28

Connection cable



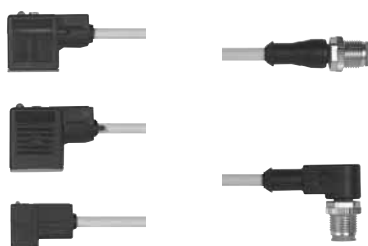
Double valve plug

Form	A	(18 mm)
	B	(10 mm)
	BI	(11 mm)

Double valve plug

Valve plug with connection cable
 Male M12 (Connector top entry)
 Male M12 (Connector at the rear)

from 1.8.29



Valve plug

Form	A	(18 mm)
	B	(10 mm)
	BI	(11 mm)
	C	(8 mm)
	CI	(9.4 mm)

Round plug connector

Male M12 straight
 90°

from 1.8.38



Adapter

Form	A	(18 mm)
	B	(10 mm)
	BI	(11 mm)

Adapter

Male M12 (Connector top entry)
 (Connector at the rear)

from 1.8.45

Valve plug

with open ended wires

Form A (18 mm)



Approvals:

1	Form	No.	18001	18021	18041								
	Suppression		24 V AC/DC with LED	24 V AC/DC with LED and suppression	110 V AC/DC with LED and suppression								
	Circuit diagram												
	Contact layout												
2	Cable type	Wire diameter 0.75 mm ²	Jacket color			Jacket color			Jacket color				
	PVC		016	216	616	016	216	616	016	216	616		
	PUR/PVC		026	226	626	026	226	626	026	226	626		
	PUR (UL/CSA-listed)		036	236	636	036	236	636	036	236	636		
	Suitable for robot cable (irradiated)		056	256	656	056	256	656	056	256	656		
3	Cable length												
	1.5 m		0150										
	3.0 m		0300										
	5.0 m		0500										
	7.5 m		0750										
	10.0 m		1000										
	Your article no.												
	The composition of your article number is explained on page 1.1.2		7	0	0	0	-	-	-	-	-		
			Murrelektronik Standard										
			1	Form				2	Cable type		3	Cable length	
Notes													
	Accessories and technical data in chapter 1.10. Further cable lengths on request.												

Valve plug

with open ended wires

Form A (18 mm)



Approvals:

1	Form No.	1 8 0 6 1	1 8 0 8 1					
	Suppression	230 V AC/DC with LED and suppression	0...230 V AC/DC without electronics					
	Circuit diagram							
	Contact layout							
2	Cable type	Jacket color						
	Wire diameter 0.75 mm²	yellow	gray	black	yellow	gray	black	
	PVC	016	216	616	016	216	616	
	PUR/PVC	026	226	626	026	226	626	
	PUR (UL/CSA-listed)	036	236	636	036	236	636	
Suitable for robot cable (irradiated)	056	256	656	056	256	656		
3	Cable length							
	1.5 m	0150						
	3.0 m	0300						
	5.0 m	0500						
	7.5 m	0750						
	10.0 m	1000						
	Your article no.							
	The composition of your article number is explained on page 1.1.2							
		1 Form		2 Cable type		3 Cable length		
Notes		Fitting conduits for adapter Art.-No. 906037 for Valve plug with M12 x 1 outer thread: Art.-No. 83161014 (gray) and Art.-No. 83161054 (black) from Murrplastik. Accessories and technical data in chapter 1.10. Further cable lengths on request.						

Valve plug

with open ended wires
for pressure switches

Form A (18 mm)



Approvals:

Valve plug

1	Form	No.	1 8 1 2 1	1 8 1 4 1
	Suppression		24 V DC with LED red/green two color	24 V DC with LED yellow/green two color
	Circuit diagram			
	Contact layout			

2	Cable type	Jacket color			Jacket color		
	Wire diameter 0.75 mm ²	yellow	gray	black	yellow	gray	black
	PVC	018	218	618	018	218	618
	PUR/PVC	028	228	628	028	228	628
	PUR (UL/CSA-listed)	038	238	638	038	238	638
	Suitable for robot cable (irradiated)	058	258	658	058	258	658

3	Cable length
	1.5 m
	3.0 m
	5.0 m
	7.5 m
	10.0 m

Your article no.

The composition of your article number is explained on page 1.1.2

7 0 0 0
Murrelektronik Standard

-

- - - -

-

- - - -

-

- - - -

1	Form	2	Cable type	3	Cable length
---	------	---	------------	---	--------------

Notes

Accessories and technical data in chapter 1.10.
Further cable lengths on request.

Valve plug

with open ended wires

Form B (10 mm)



Valve plug

1	Form	No.	1 000 1	1 002 1	1 004 1
	Suppression		24 V AC/DC with LED	24 V AC/DC with LED and suppression	110 V AC/DC with LED and suppression
	Circuit diagram				
	Contact layout				

2	Cable type	Jacket color			Jacket color			Jacket color		
	Wire diameter 0.75 mm ²	yellow	gray	black	yellow	gray	black	yellow	gray	black
	PVC	016	216	616	016	216	616	016	216	616
	PUR/PVC	026	226	626	026	226	626	026	226	626
	PUR (UL/CSA-listed)	036	236	636	036	236	636	036	236	636
	Suitable for robot cable (irradiated)	056	256	656	056	256	656	056	256	656

3	Cable length	
	1.5 m	0150
	3.0 m	0300
	5.0 m	0500
	7.5 m	0750
	10.0 m	1000

Your article no.	
<p>The composition of your article number is explained on page 1.1.2</p>	
	<p>Murrelektronik Standard</p>

1	Form	2	Cable type	3	Cable length
----------	------	----------	------------	----------	--------------

Notes
Accessories and technical data in chapter 1.10. Further cable lengths on request.

Valve plug

with open ended wires

Form B (10 mm)



1	Form	No. 10061	10081			
	Suppression	0...230 V AC/DC without electronics	24 V AC/DC with LED and suppression			
	Circuit diagram					
Contact layout	0°, PE at cable entry	180°, PE opposite cable entry				
2	Cable type	Jacket color				
	Wire diameter 0.75 mm²	yellow	gray	black	yellow	
	PVC	016	216	616	016	
	PUR/PVC	026	226	626	026	
	PUR (UL/CSA-listed)	036	236	636	036	
	Suitable for robot cable (irradiated)	056	256	656	056	
3	Cable length					
	1.5 m				0150	
	3.0 m				0300	
	5.0 m				0500	
	7.5 m				0750	
	10.0 m				1000	
Your article no.						
The composition of your article number is explained on page 1.1.2	<div style="display: flex; align-items: center; gap: 10px;"> <div style="border: 1px solid gray; padding: 5px; text-align: center;"> 7 0 0 0 Murrelektronik Standard </div> - <div style="border: 1px solid gray; width: 60px; height: 40px; background-color: #d3d3d3;"></div> - <div style="border: 1px solid gray; width: 60px; height: 40px; background-color: #d3d3d3;"></div> <div style="border: 1px solid gray; width: 60px; height: 40px; background-color: #d3d3d3;"></div> </div>					
	1	Form	2	Cable type	3	Cable length
Notes						
	Accessories and technical data in chapter 1.10. Further cable lengths on request.					

Valve plug

Valve plug

with open ended wires

Form BI (11 mm)
Industrial standard



Valve plug

1	Form	No.	1 1 0 0 1	1 1 0 2 1	1 1 0 4 1
	Suppression		24 V AC/DC with LED	24 V AC/DC with LED and suppression	110 V AC/DC with LED and suppression
	Circuit diagram				
	Contact layout				

2	Cable type	Jacket color			Jacket color			Jacket color		
	Wire diameter 0.75 mm ²	yellow	gray	black	yellow	gray	black	yellow	gray	black
	PVC	016	216	616	016	216	616	016	216	616
	PUR/PVC	026	226	626	026	226	626	026	226	626
	PUR (UL/CSA-listed)	036	236	636	036	236	636	036	236	636
	Suitable for robot cable (irradiated)	056	256	656	056	256	656	056	256	656

3	Cable length	
	1.5 m	0150
	3.0 m	0300
	5.0 m	0500
	7.5 m	0750
	10.0 m	1000

Your article no.	
<p>The composition of your article number is explained on page 1.1.2</p>	<div style="display: flex; align-items: center; gap: 10px;"> <div style="border: 1px solid black; padding: 5px; text-align: center;"> 7 0 0 0 Murrelektronik Standard </div> - <div style="border: 1px solid black; width: 60px; height: 40px; display: flex; align-items: center; justify-content: center;"> - - - - </div> - <div style="border: 1px solid black; width: 60px; height: 40px; display: flex; align-items: center; justify-content: center;"> - - - - </div> <div style="border: 1px solid black; width: 60px; height: 40px; display: flex; align-items: center; justify-content: center;"> - - - - </div> </div>

1	Form	2	Cable type	3	Cable length
----------	------	----------	------------	----------	--------------

Notes
<p>Accessories and technical data in chapter 1.10. Further cable lengths on request.</p>

Valve plug

with open ended wires

Form BI (11 mm)
Industrial standard



1	Form	No.	1 1 0 6 1	1 1 0 8 1						
	Suppression		0...230 V AC/DC without electronics	24 V AC/DC with LED and suppression						
	Circuit diagram									
	Contact layout		0°, PE at cable entry 	180°, PE opposite cable entry 						
2	Cable type	Jacket color			Jacket color					
	Wire diameter 0.75 mm ²	yellow	gray	black	yellow	gray				
	PVC	016	216	616	016	216				
	PUR/PVC	026	226	626	026	226				
	PUR (UL/CSA-listed)	036	236	636	036	236				
	Suitable for robot cable (irradiated)	056	256	656	056	256				
3	Cable length									
	1.5 m	0150								
	3.0 m	0300								
	5.0 m	0500								
	7.5 m	0750								
	10.0 m	1000								
	Your article no.									
	The composition of your article number is explained on page 1.1.2	<div style="display: flex; align-items: center; gap: 10px;"> <div style="border: 1px solid gray; padding: 5px; text-align: center;"> 7 0 0 0 Murrelektronik Standard </div> - <div style="border: 1px solid gray; width: 60px; height: 30px; background-color: #cccccc;"></div> - <div style="border: 1px solid gray; width: 60px; height: 30px; background-color: #cccccc;"></div> - <div style="border: 1px solid gray; width: 60px; height: 30px; background-color: #cccccc;"></div> </div>								
		1	Form		2	Cable type		3	Cable length	
Notes	Accessories and technical data in chapter 1.10. Further cable lengths on request.									

Valve plug

Valve plug

with open ended wires

Form C (8 mm)



Approvals:

Valve plug

1	Form	No.	80001	80021
	Suppression		24 V AC/DC with LED	24 V AC/DC with LED and suppression
	Circuit diagram			
	Contact layout			

2	Cable type	Jacket color			Jacket color		
	Wire diameter 0.75 mm ²	yellow	gray	black	yellow	gray	black
	PVC	016	216	616	016	216	616
	PUR/PVC	026	226	626	026	226	626
	PUR (UL/CSA-listed)	036	236	636	036	236	636
	Suitable for robot cable (irradiated)	056	256	656	056	256	656

3	Cable length	
	1.5 m	0150
	3.0 m	0300
	5.0 m	0500
	7.5 m	0750
	10.0 m	1000

Your article no.

The composition of your article number is explained on page 1.1.2

7 0 0 0 - [] - [] - []

Murrelektronik Standard

1 Form **2** Cable type **3** Cable length

Notes

Accessories and technical data in chapter 1.10.
Further cable lengths on request.

Valve plug

with open ended wires

Form C (8 mm)

Approvals:



1	Form	No.	80041	80061							
	Suppression		110 V AC/DC with LED and suppression	0...230 V AC/DC without electronics							
	Circuit diagram										
	Contact layout										
2	Cable type	Wire diameter 0.75 mm²	Jacket color			Jacket color					
		PVC	016	216	616	016	216	616			
		PUR/PVC	026	226	626	026	226	626			
		PUR (UL/CSA-listed)	036	236	636	036	236	636			
		Suitable for robot cable (irradiated)	056	256	656	056	256	656			
3	Cable length										
		1.5 m	0150								
		3.0 m	0300								
		5.0 m	0500								
		7.5 m	0750								
		10.0 m	1000								
	Your article no.										
	The composition of your article number is explained on page 1.1.2										
			1	Form		2	Cable type		3	Cable length	
Notes		Accessories and technical data in chapter 1.10. Further cable lengths on request.									

Valve plug

Valve plug

with open ended wires

Form CI (9.4 mm)
Industrial standard



Approvals:

Valve plug

1	Form	No.	94001	94021
	Suppression		24 V AC/DC with LED	24 V AC/DC with LED and suppression
	Circuit diagram			
	Contact layout			

2	Cable type	Jacket color			Jacket color		
	Wire diameter 0.75 mm ²	yellow	gray	black	yellow	gray	black
	PVC	016	216	616	016	216	616
	PUR/PVC	026	226	626	026	226	626
	PUR (UL/CSA-listed)	036	236	636	036	236	636
	Suitable for robot cable (irradiated)	056	256	656	056	256	656

3	Cable length	
	1.5 m	0150
	3.0 m	0300
	5.0 m	0500
	7.5 m	0750
	10.0 m	1000

Your article no.	
<p>The composition of your article number is explained on page 1.1.2</p>	

1	Form	2	Cable type	3	Cable length
---	------	---	------------	---	--------------

Notes
<p>Accessories and technical data in chapter 1.10. Further cable lengths on request.</p>

Valve plug

with open ended wires

Form CI (9.4 mm)
Industrial standard



Approvals:

1	Form	No.	94041			94061									
	Suppression	110 V AC/DC with LED and suppression			0...230 V AC/DC without electronics										
	Circuit diagram														
	Contact layout														
2	Cable type	Jacket color			Jacket color										
	Wire diameter 0.75 mm²	yellow	gray	black	yellow	gray	black								
	PVC	016	216	616	016	216	616								
	PUR/PVC	026	226	626	026	226	626								
	PUR (UL/CSA-listed)	036	236	636	036	236	636								
Suitable for robot cable (irradiated)	056	256	656	056	256	656									
3	Cable length														
	1.5 m	0150													
	3.0 m	0300													
	5.0 m	0500													
	7.5 m	0750													
	10.0 m	1000													
	Your article no.														
	<div style="display: flex; align-items: center; gap: 10px;"> <div style="border: 1px solid gray; padding: 5px; text-align: center;"> 7 0 0 0 Murrelektronik Standard </div> - <div style="border: 1px solid gray; width: 60px; height: 40px; margin: 0 auto;"></div> - <div style="border: 1px solid gray; width: 60px; height: 40px; margin: 0 auto;"></div> <div style="border: 1px solid gray; width: 60px; height: 40px; margin: 0 auto;"></div> </div>														
	1		Form			2		Cable type			3		Cable length		

Valve plug

Notes
Accessories and technical data in chapter 1.10.
Further cable lengths on request.

Valve plug

Field-wireable
with screw terminals

Form A (18 mm)



Valve plug

1	Form	No.	29001	29021	29041	29061
	Suppression		24 V AC/DC	24 V AC/DC	24 V AC/DC	24 V AC/DC
			LED and Z-Diode	LED and Z-Diode	LED and RC	LED and RC
	Circuit diagram		metric	PG 9	metric	PG 9
	Contact layout					
Technical data						
	24 V AC/DC	LED + Z-Diode	LED: yellow (appr. 12 mA),	Suppression: Z-Diodes,	Switch off spike: ≤ 55V,	Delay: ≤ 20 ms, Hold on: ≤ 100W (VA)
		LED + RC	LED: yellow (appr. 12 mA),	Suppression: RC-network,	Switch off spike: ≤ 100V,	Delay: ≤ 10 ms, Hold on: ≤ 50W (VA)
	Compression gland		PG 9; (PG 11 and NPT 1/2" at Form A on request); M16 x 1.5 mm to DIN EN 50262			
	Clamping range/ outer-Ø		PG 9-Compression gland/6...8 mm; M16 x 1.5 mm/5...10 mm			
	Terminals		single core 4 mm ² , stranded 2.5 mm ² , with ferrules 1.5 mm ²			
	Plug color		black housing, transparent flip-top			
	Protection		IP65 when plugged and screwed down (EN 60529), with gland			
	Temperature range		-20...+60 °C			
Your article no.						
	The composition of your article number is explained on page 1.1.2		7 0 0 0	-	-	0 0 0 0
			Murrelektronik Standard			0 0 0 0
				1		Form
Notes						
			Accessories and technical data in chapter 1.10.			

Valve plug

Field-wireable
with screw terminals

Form A (18 mm)



1	Form	No.	29081	29101	29121	29141
	Suppression		110 V AC/DC LED and VDR	110 V AC/DC LED and VDR	110 V AC/DC LED and RC	110 V AC/DC LED and RC
	Circuit diagram		metric	PG 9	metric (for 110 V and 230 V AC/DC)	PG 9
	Contact layout					
Technical data						
	110 V AC/DC	LED + VDR	LED: yellow (appr. 12 mA),	Suppression: Varistor,	Switch off spike: ≤ 250 V,	Delay: ≤ 10 ms, Hold on: ≤ 100 W (VA)
		LED + RC	LED: yellow (appr. 12 mA),	Suppression: RC-network,	Switch off spike: ≤ 400 V,	Delay: ≤ 10 ms, Hold on: ≤ 50 W (VA)
	Compression gland		PG 9; (PG 11 and NPT 1/2" at Form A on request); M16 x 1.5 mm to DIN EN 50262			
	Clamping range/ outer-Ø		PG 9-Compression gland/6...8 mm; M16 x 1.5 mm/5...10 mm			
	Terminals		single core 4 mm ² , stranded 2.5 mm ² , with ferrules 1.5 mm ²			
	Plug color		black housing, transparent flip-top			
	Protection		IP65 when plugged and screwed down (EN 60529), with gland			
	Temperature range		-20...+60 °C			
Your article no.						
	The composition of your article number is explained on page 1.1.2		7 0 0 0	-	0 0 0	0 0 0 0
			Murrelektronik Standard			
			1 Form			
Notes						
			Accessories and technical data in chapter 1.10.			

Valve plug

Valve plug

Field-wireable
with screw terminals

Form A (18 mm)



Valve plug

1	Form	No.	29161	29181	29121	29141
	Suppression		230 V AC/DC	230 V AC/DC	230 V AC/DC	230 V AC/DC
			LED and VDR	LED and VDR	LED and RC	LED and RC
	Circuit diagram		metric	PG 9	metric	PG 9
					(for 110 V and 230 V AC/DC) 	
	Contact layout					
Technical data						
	230 V AC/DC	LED + VDR	LED: yellow (appr. 12 mA),	Suppression: Varistor,	Switch off spike: ≤ 450 V,	Delay: ≤ 15 ms, Hold on: ≤ 100 W (VA)
		LED + RC	LED: yellow (appr. 12 mA),	Suppression: RC-network,	Switch off spike: ≤ 450 V,	Delay: ≤ 15 ms, Hold on: ≤ 50 W (VA)
	Compression gland	PG 9; (PG 11 and NPT 1/2" at Form A on request); M16 x 1.5 mm to DIN EN 50262				
	Clamping range/ outer-Ø	PG 9-gland/6...8 mm; M16 x 1.5 mm/5...10 mm				
	Terminals	single core 4 mm ² , stranded 2.5 mm ² , with ferrules 1.5 mm ²				
	Plug color	black housing, transparent flip-top				
	Protection	IP65 when plugged and screwed down (EN 60529), with compression gland				
	Temperature range	-20...+60 °C				
Your article no.						
	The composition of your article number is explained on page 1.1.2	<div style="display: flex; justify-content: space-around; align-items: center;"> <div style="border: 1px solid black; padding: 5px; background-color: #cccccc;">7 0 0 0</div> - <div style="border: 1px solid black; padding: 5px; background-color: #cccccc;">- - - -</div> - <div style="border: 1px solid black; padding: 5px; background-color: #cccccc;">0 0 0</div> <div style="border: 1px solid black; padding: 5px; background-color: #cccccc;">0 0 0 0</div> </div> <p style="margin-top: 5px; text-align: center;">Murrelektronik Standard</p>				
			1 Form			
Notes						
Accessories and technical data in chapter 1.10.						

Valve plug

Field-wireable
with screw terminals

Form A (18 mm)



1	Form	No.	29241	29261	
	Suppression		230 V AC/DC without electronics	230 V AC/DC without electronics	
	Circuit diagram		metric	PG 9	
	Contact layout				
Technical data					
	0...230 V AC/DC without electronics		Hold on: ≤ 920 W (VA), max. switched current 10 A		
	Compression gland		PG 9; (PG 11 and NPT 1/2" at Form A on request); M16 x 1,5 mm to DIN EN 50262		
	Clamping range/ outer-Ø		PG 9-gland/6...8 mm; M16 x 1.5 mm/5...10 mm		
	Terminals		single core 4 mm ² , stranded 2.5 mm ² , with ferrules 1.5 mm ²		
	Plug color		black housing, transparent flip-top		
	Protection		IP65 when plugged and screwed down (EN 60529), with compression gland		
	Temperature range		-20...+60 °C		
Your article no.					
	The composition of your article number is explained on page 1.1.2		<div style="border: 1px solid black; padding: 2px; display: inline-block;">7 0 0 0</div> - <div style="border: 1px solid black; padding: 2px; display: inline-block;">- - - - -</div> - <div style="border: 1px solid black; padding: 2px; display: inline-block;">0 0 0</div> <div style="border: 1px solid black; padding: 2px; display: inline-block; margin-left: 20px;">0 0 0 0</div>		
			1 Form		
Notes					
			Accessories and technical data in chapter 1.10.		

Valve plug

Valve plug

Field-wireable
with screw terminals
for pressure switches

Form A (18 mm)



Valve plug

1	Form	No.	29281	29301	29321	29341
	Suppression		24...230 V AC/DC metric	24...230 V AC/DC PG 9	24...230 V AC/DC metric	24...230 V AC/DC PG 9
	Circuit diagram					
	Contact layout					
Technical data						
	Current voltage		≤ 40 mA at 24 V, ≤ 3 mA at 110 V, ≤ 6 mA at 230 V			
	Switching current/supply current		≤ 4 A			
	Compression gland		PG 9; (PG 11 and NPT 1/2" at Form A on request); M16 x 1.5 mm to DIN EN 50262			
	Clamping range/ outer-Ø		PG 9-gland/6...8 mm; M16 x 1.5 mm/5...10 mm			
	Terminals		single core 4 mm ² , stranded 2.5 mm ² , with ferrules 1.5 mm ²			
	Plug color		black housing, transparent flip-top			
	Protection		IP65 when plugged and screwed down (EN 60529), with compression gland			
	Temperature range		-20...+60 °C			
Your article no.						
	The composition of your article number is explained on page 1.1.2		7 0 0 0	-	-	0 0 0 0
			Murrelektronik Standard			
			1 Form			
Notes						
			Accessories and technical data in chapter 1.10.			

Valve plug

Field-wireable
with screw terminals
for pressure switches

Form A (18 mm)



1	Form	No.	29361	29381	29401	29421		
	Suppression		24...230 V AC/DC metric	24...230 V AC/DC PG 9	24...230 V AC/DC metric	24...230 V AC/DC PG 9		
	Circuit diagram							
	Contact layout							
Technical data								
	Current voltage		≤ 40 mA at 24 V, ≤ 3 mA at 110 V, ≤ 6 mA at 230 V					
	Switching current/supply current		≤ 4 A					
	Compression gland		PG 9; (PG 11 and NPT 1/2" at Form A on request); M16 x 1.5 mm to DIN EN 50262					
	Clamping range/ outer-Ø		PG 9-gland/6...8 mm; M16 x 1.5 mm/5...10 mm					
	Terminals		single core 4 mm ² , stranded 2.5 mm ² , with ferrules 1.5 mm ²					
	Plug color		black housing, transparent flip-top					
	Protection		IP65 when plugged and screwed down (EN 60529), with compression gland					
	Temperature range		-20...+60 °C					
Your article no.								
	The composition of your article number is explained on page 1.1.2		7 0 0 0	-	---	-	0 0 0	0 0 0 0
			Murrelektronik Standard					
			1 Form					
Notes								
			Accessories and technical data in chapter 1.10.					

Valve plug

Valve plug

Field-wireable
with screw terminals
for pressure switches

Form A (18 mm)



Valve plug

1	Form	No.	29441	29461
	Suppression		24 V AC/DC metric	24 V AC/DC PG 9
	Circuit diagram			
	Contact layout			

Technical data

Current voltage	≤ 20 mA
Switching current/supply current	≤ 4 A
Compression gland	PG 9; (PG 11 and NPT 1/2" at Form A on request); M16 x 1.5 mm to DIN EN 50262
Clamping range/ outer-Ø	PG 9-gland/6...8 mm; M16 x 1.5 mm/5...10 mm
Terminals	single core 4 mm ² , stranded 2.5 mm ² , with ferrules 1.5 mm ²
Plug color	black housing, transparent flip-top
Protection	IP65 when plugged and screwed down (EN 60529), with compression gland
Temperature range	-20...+60 °C

Your article no.

The composition of your article number is explained on page 1.1.2

7 0 0 0 -
 _ _ _ _ -
 0 0 0 0

Murrelektronik Standard

1 Form

Notes

Accessories and technical data in chapter 1.10.

Valve plug

Field-wireable
with screw terminals

Form A (18 mm)



1	Form	No.	29481	29501	29521	29541
	Suppression		24 V DC with switching amplifier	24 V DC with switching amplifier	24...230 V AC/DC with bridge rectifier	24...230 V AC/DC with bridge rectifier
	Circuit diagram		metric	PG 9	metric	PG 9
	Contact layout		<p>Contact 3 not used</p>	<p>Contact 3 not used</p>		
	Technical data					
	Current voltage		≤ 3 mA (control current)		≤ 20 mA (LED)	
	Switching current/supply current		≤ 2 A (short-circuit protected)		≤ 1.5 A	
	Hold on valve		≤ 60 W		≤ 345 W (VA)	
	Control voltage		ON: 12...42 V DC; OFF: ≤ 8 V DC (IN)		-	
	Switching frequency		≤ 400 Hz		-	
	Switch off spike		≤ 1 V		≤ 3 V	
	Compression gland		PG 9; (PG 11 and NPT 1/2" at Form A on request); M16 x 1.5 mm to DIN EN 50262			
	Clamping range/ outer-Ø		PG 9-gland/6...8 mm; M16 x 1.5 mm/5...10 mm			
	Terminals		single core 4 mm ² , stranded 2.5 mm ² , with ferrules 1.5 mm ²			
	Plug color		black housing, transparent flip-top			
	Protection		IP65 when plugged and screwed down (EN 60529), with compression gland			
	Temperature range		-20...+60 °C			
	Your article no.					
	The composition of your article number is explained on page 1.1.2		7 0 0 0 - --- - 0 0 0 0 0 0 0 Murrelektronik Standard			
			1 Form			
	Notes		Accessories and technical data in chapter 1.10.			

Valve plug

Field-wireable
with screw terminals

Form B (10 mm)



Valve plug

1	Form	No.	29561	29581	29601	29621
	Suppression		24 V AC/DC LED and Z-Diode	24 V AC/DC LED and Z-Diode	24 V AC/DC LED and RC	24 V AC/DC LED and RC
	Circuit diagram		metric	PG 9	metric	PG 9
	Contact layout					
Technical data						
	24 V AC/DC	LED + Z-Diode	LED: yellow (appr. 12 mA),	Suppression: Z-Diodes,	Switch off spike: ≤ 55V,	Delay: ≤ 20 ms, Hold on: ≤ 100W (VA)
		LED + RC	LED: yellow (appr. 12 mA),	Suppression: RC-network,	Switch off spike: ≤ 100V,	Delay: ≤ 10 ms, Hold on: ≤ 50W (VA)
	Compression gland		PG 9; (PG 11 and NPT 1/2" at Form A on request); M16 x 1.5 mm to DIN EN 50262			
	Clamping range/ outer-Ø		PG 9-gland/6...8 mm; M16 x 1.5 mm/5...10 mm			
	Terminals		single core 4 mm ² , stranded 2.5 mm ² , with ferrules 1.5 mm ²			
	Plug color		black housing, transparent flip-top			
	Protection		IP65 when plugged and screwed down (EN 60529), with compression gland			
	Temperature range		-20...+60 °C			
Your article no.						
	The composition of your article number is explained on page 1.1.2		7 0 0 0	- - - - -	- 0 0 0	0 0 0 0
			Murrelektronik Standard			
			1 Form			
Notes						
			Accessories and technical data in chapter 1.10.			

Valve plug

Field-wireable
with screw terminals

Form B (10 mm)



1	Form	No.	29641	29661			
	Suppression		110 V AC/DC LED and VDR	110 V AC/DC LED and VDR			
	Circuit diagram		metric	PG 9			
	Contact layout						
Technical data							
110 V AC/DC		LED + VDR	LED: yellow (appr. 12 mA),	Suppression: Varistor,	Switch off spike: ≤ 250 V,	Delay: ≤ 10 ms,	Hold on: ≤ 100 W (VA)
		LED + RC	LED: yellow (appr. 12 mA),	Suppression: RC-network,	Switch off spike: ≤ 400 V,	Delay: ≤ 10 ms,	Hold on: ≤ 50 W (VA)
Compression gland		PG 9; (PG 11 and NPT 1/2" at Form A on request); M16 x 1.5 mm to DIN EN 50262					
Clamping range/ outer-Ø		PG 9-gland/6...8 mm; M16 x 1.5 mm/5...10 mm					
Terminals		single core 4 mm ² , stranded 2.5 mm ² , with ferrules 1.5 mm ²					
Plug color		black housing, transparent flip-top					
Protection		IP65 when plugged and screwed down (EN 60529), with compression gland					
Temperature range		-20...+60 °C					
Your article no.							
The composition of your article number is explained on page 1.1.2		7 0 0 0 - --- - 0 0 0 0 0 0 0					
		Murrelektronik Standard					
		1 Form					
Notes							
Accessories and technical data in chapter 1.10.							

Valve plug

Valve plug

Field-wireable
with screw terminals

Form B (10 mm)



1	Form	No.	29681	29701	29721	29741
	Suppression		230 V AC/DC LED and VDR	230 V AC/DC LED and VDR	230 V AC/DC LED and RC	230 V AC/DC LED and RC
	Circuit diagram		metric	PG 9	metric	PG 9
	Contact layout					
Technical data						
	230 V AC/DC	LED + VDR	LED: yellow (appr. 12 mA),	Suppression: Varistor,	Switch off spike: ≤ 450 V,	Delay: ≤ 15 ms, Hold on: ≤ 100W (VA)
		LED + RC	LED: yellow (appr. 12 mA),	Suppression: RC-network,	Switch off spike: ≤ 450 V,	Delay: ≤ 15 ms, Hold on: ≤ 50 W (VA)
	Compression gland		PG 9; (PG 11 and NPT 1/2" at Form A on request); M16 x 1.5 mm to DIN EN 50262			
	Clamping range/ outer-Ø		PG 9-gland/6...8 mm; M16 x 1.5 mm/5...10 mm			
	Terminals		single core 4 mm ² , stranded 2.5 mm ² , with ferrules 1.5 mm ²			
	Plug color		black housing, transparent flip-top			
	Protection		IP65 when plugged and screwed down (EN 60529), with compression gland			
	Temperature range		-20...+60 °C			
Your article no.						
	The composition of your article number is explained on page 1.1.2		<div style="border: 1px solid black; padding: 2px; display: inline-block;">7 0 0 0</div> - <div style="border: 1px solid black; padding: 2px; display: inline-block; width: 80px; height: 20px; margin: 0 auto;"></div> - <div style="border: 1px solid black; padding: 2px; display: inline-block;">0 0 0</div> <div style="border: 1px solid black; padding: 2px; display: inline-block; width: 80px; height: 20px; margin: 0 auto;"></div> <div style="border: 1px solid black; padding: 2px; display: inline-block;">0 0 0 0</div>			
			1 Form			
Notes						
Accessories and technical data in chapter 1.10.						

Valve plug

Valve plug

Field-wireable
with screw terminals

Form B (10 mm)



1	Form	No.	29761	29781	
	Suppression		230 V AC/DC without electronics	230 V AC/DC without electronics	
	Circuit diagram		metric	PG 9	
	Contact layout				
Technical data					
	Supply voltage		230 V AC/DC		
	Max. hold on current		10 A		
	Compression gland		PG 9; (PG 11 and NPT 1/2" at Form A on request); M16 x 1.5 mm to DIN EN 50262		
	Clamping range/ outer-Ø		PG 9-gland/6...8 mm; M16 x 1.5 mm/5...10 mm		
	Terminals		single core 4 mm ² , stranded 2.5 mm ² , with ferrules 1.5 mm ²		
	Plug color		black housing, transparent flip-top		
	Protection		IP65 when plugged and screwed down (EN 60529), with compression gland		
	Temperature range		-20...+60 °C		
Your article no.					
	The composition of your article number is explained on page 1.1.2		<div style="border: 1px solid black; padding: 2px; display: inline-block;">7 0 0 0</div> - <div style="border: 1px solid black; padding: 2px; display: inline-block;">- - - - -</div> - <div style="border: 1px solid black; padding: 2px; display: inline-block;">0 0 0</div> <div style="border: 1px solid black; padding: 2px; display: inline-block; margin-left: 20px;">0 0 0 0</div>		
			1 Form		
Notes					
			Accessories and technical data in chapter 1.10.		

Valve plug

Valve plug

Field-wireable
with screw terminals

Form B (11 mm)
Industrial standard



Valve plug

1	Form	No.	29801	29821	29841	29861
	Suppression		24 V AC/DC LED and Z-Diode	24 V AC/DC LED and Z-Diode	24 V AC/DC LED and RC	24 V AC/DC LED and RC
	Circuit diagram		metric	PG 9	metric	PG 9
	Contact layout					
Technical data						
	24 V AC/DC	LED + Z-Diode	LED: yellow (appr. 12 mA),	Suppression: Z-Diodes,	Switch off spike: ≤ 55V,	Delay: ≤ 20 ms, Hold on: ≤ 100W (VA)
		LED + RC	LED: yellow (appr. 12 mA),	Suppression: RC-network,	Switch off spike: ≤ 100V,	Delay: ≤ 10 ms, Hold on: ≤ 50 W (VA)
	Compression gland		PG 9; (PG 11 and NPT 1/2" at Form A on request); M16 x 1.5 mm to DIN EN 50262			
	Clamping range/ outer-Ø		PG 9-Compression gland/6...8 mm; M16 x 1.5 mm/5...10 mm			
	Terminals		single core 4 mm ² , stranded 2.5 mm ² , with ferrules 1.5 mm ²			
	Plug color		black housing, transparent flip-top			
	Protection		IP65 when plugged and screwed down (EN 60529), with compression gland			
	Temperature range		-20...+60 °C			
Your article no.						
	The composition of your article number is explained on page 1.1.2		7 0 0 0 - - 0 0 0 0 0 0 0			
			1 Form			
Notes						
			Accessories and technical data in chapter 1.10.			

Valve plug

Field-wireable
with screw terminals

Form B (11 mm)
Industrial standard



1	Form	No.	29881	29901	
	Suppression		110 V AC/DC LED and VDR	110 V AC/DC LED and VDR	
	Circuit diagram		metric	PG 9	
	Contact layout				
Technical data					
110 V AC/DC	LED + VDR	LED: yellow (appr. 12 mA),	Suppression: Varistor,	Switch off spike: ≤ 250 V,	Delay: ≤ 10 ms, Hold on: ≤ 100 W (VA)
	LED + RC	LED: yellow (appr. 12 mA),	Suppression: RC-network,	Switch off spike: ≤ 400 V,	Delay: ≤ 10 ms, Hold on: ≤ 50 W (VA)
Compression gland	PG 9; (PG 11 and NPT 1/2" at Form A on request); M16 x 1.5 mm to DIN EN 50262				
Clamping range/ outer-Ø	PG 9-gland/6...8 mm; M16 x 1.5 mm/5...10 mm				
Terminals	single core 4 mm ² , stranded 2.5 mm ² , with ferrules 1.5 mm ²				
Plug color	black housing, transparent flip-top				
Protection	IP65 when plugged and screwed down (EN 60529), with compression gland				
Temperature range	-20...+60 °C				
Your article no.					
The composition of your article number is explained on page 1.1.2	<div style="display: flex; justify-content: space-around; align-items: center;"> <div style="border: 1px solid black; padding: 5px; text-align: center;">7 0 0 0</div> - <div style="border: 1px solid black; padding: 5px; text-align: center;">- - - - -</div> - <div style="border: 1px solid black; padding: 5px; text-align: center;">0 0 0</div> <div style="border: 1px solid black; padding: 5px; text-align: center;">0 0 0 0</div> </div>				
	1 Form				
Notes					
Accessories and technical data in chapter 1.10.					

Valve plug

Valve plug

Field-wireable
with screw terminals

Form B (11 mm)
Industrial standard



Valve plug

1	Form	No.	29921	29941	29961	29981
	Suppression		230 V AC/DC LED and VDR	230 V AC/DC LED and VDR	230 V AC/DC LED and RC	230 V AC/DC LED and RC
	Circuit diagram		metric	PG 9	metric	PG 9
	Contact layout					
Technical data						
	230 V AC/DC	LED + VDR	LED: yellow (appr. 12 mA),	Suppression: Varistor,	Switch off spike: ≤ 450 V,	Delay: ≤ 15 ms, Hold on: ≤ 100 W (VA)
		LED + RC	LED: yellow (appr. 12 mA),	Suppression: RC-network,	Switch off spike: ≤ 450 V,	Delay: ≤ 15 ms, Hold on: ≤ 50 W (VA)
	Compression gland		PG 9; (PG 11 and NPT 1/2" at Form A on request); M16 x 1.5 mm to DIN EN 50262			
	Clamping range/ outer-Ø		PG 9-gland/6...8 mm; M16 x 1.5 mm/5...10 mm			
	Terminals		single core 4 mm ² , stranded 2.5 mm ² , with ferrules 1.5 mm ²			
	Plug color		black housing, transparent flip-top			
	Protection		IP65 when plugged and screwed down (EN 60529), with compression gland			
	Temperature range		-20...+60 °C			
Your article no.						
	The composition of your article number is explained on page 1.1.2		<div style="border: 1px solid black; padding: 2px; display: inline-block;">7 0 0 0</div> - <div style="border: 1px solid black; padding: 2px; display: inline-block;">_ _ _ _</div> - <div style="border: 1px solid black; padding: 2px; display: inline-block;">0 0 0</div> <div style="border: 1px solid black; padding: 2px; display: inline-block; margin-left: 20px;">0 0 0 0</div>			
			1	Form		
Notes						
Accessories and technical data in chapter 1.10.						

Valve plug

Field-wireable
with screw terminals

Form B (11 mm)
Industrial standard



1	Form	No.	30001	30021	
	Suppression		230 V AC/DC without electronics	230 V AC/DC without electronics	
	Circuit diagram		metric	PG 9	
	Contact layout				
	Technical data				
	Supply voltage		230 V AC/DC		
	Max. hold on current		10 A		
	Compression gland		PG 9; (PG 11 and NPT 1/2" at Form A on request); M16 x 1.5 mm to DIN EN 50262		
	Clamping range/ outer-Ø		PG 9-gland/6...8 mm; M16 x 1.5 mm/5...10 mm		
	Terminals		single core 4 mm ² , stranded 2.5 mm ² , with ferrules 1.5 mm ²		
	Plug color		black housing, transparent flip-top		
	Protection		IP65 when plugged and screwed down (EN 60529), with compression gland		
	Temperature range		-20...+60 °C		
	Your article no.				
	The composition of your article number is explained on page 1.1.2		7 0 0 0 - --- - 0 0 0 0 0 0 0		
			1 Form		
	Notes				
			Accessories and technical data in chapter 1.10.		

Valve plug

Field-wireable

with isolation displacement technology

Form C (8 mm)



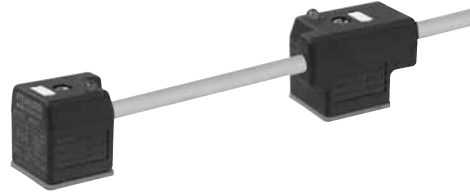
Valve plug

1	Form	No. 80101	80081
	Suppression	0...230 V AC/DC without electronics	24 V AC/DC with suppression
	Circuit diagram	<p>The cable outlet can be turned in 3 x 90° steps</p>	<p>The cable outlet can be turned in 3 x 90° steps</p>
	Contact layout		
Technical data			
	Supply voltage	0...250 V AC/300 V DC or 24 V AC/DC with suppression	
	Current per contact	max. 3 A	
	Connection diameter	0.25...0.5 mm ² (conductor diameter ≥ 0.1 mm)	
	Outer wire diameter	1.2...1.6 mm	
	Outer cable diameter	4.0...6.0 mm	
	Connection frequency	10 x (on the same position)	
	Protection	IP67 when plugged and screwed down (EN 60529)	
	Temperature range	-25...+90 °C	
	Dimensions H x W x D/thread	28 x 16 x 16 mm/M14 x 1	
	Total length, assembled	44.5 mm	
Your article no.			
	The composition of your article number is explained on page 1.1.2	<div style="display: flex; justify-content: space-around; align-items: center;"> <div style="border: 1px solid black; padding: 5px; text-align: center;">7 0 0 0</div> - <div style="border: 1px solid black; padding: 5px; text-align: center;">- - - - -</div> - <div style="border: 1px solid black; padding: 5px; text-align: center;">0 0 0</div> <div style="border: 1px solid black; padding: 5px; text-align: center;">0 0 0 0</div> </div> <p style="text-align: center; margin-top: 5px;">Murrelektronik Standard</p>	
		1 Form	
Notes			
Accessories and technical data in chapter 1.10. Further cable lengths on request.			

Valve plug

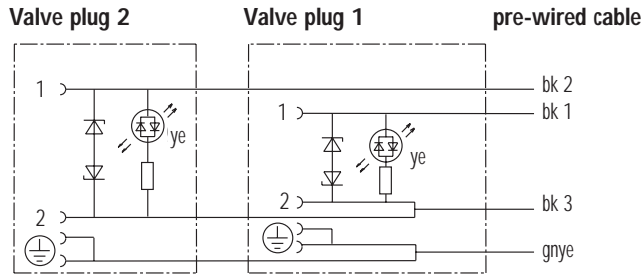
Double valve plug
with pre-wired cable

Form A (18 mm)

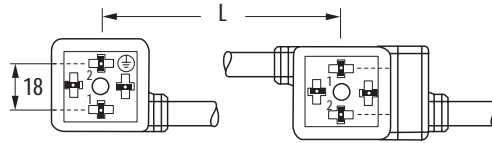


1	Form	No.	58001	58021	58041
	Suppression		4-pole, 24 V AC/DC Version L = 100 mm	4-pole, 24 V AC/DC Version L = 150 mm	4-pole, 24 V AC/DC Version L = 200 mm

Circuit diagram



Contact layout



Jacket color for pre-wired cable = Jacket color for connection cable

2	Cable type	Jacket color			Jacket color			Jacket color		
	Wire diameter 0.75 mm ²	yellow	gray	black	yellow	gray	black	yellow	gray	black
	PVC	017	217	617	017	217	617	017	217	617
	PUR/PVC	027	227	627	027	227	627	027	227	627
	PUR (UL/CSA-listed)	037	237	637	037	237	637	037	237	637

3	Cable length	
	1.5 m	0150
	3.0 m	0300
	5.0 m	0500
	7.5 m	0750
	10.0 m	1000

Your article no.

The composition of your article number is explained on page 1.1.2



1 Form 2 Cable type 3 Cable length

Notes

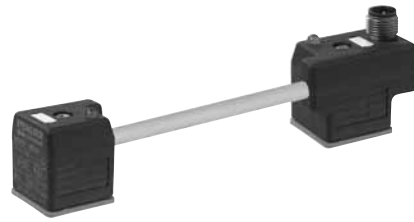
Accessories and technical data in chapter 1.10.
Further cable lengths on request.

Valve plug

Valve plug

Double valve plug
with Male M12
Connector top entry

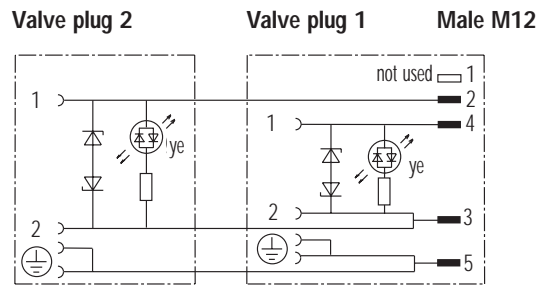
Form A (18 mm)



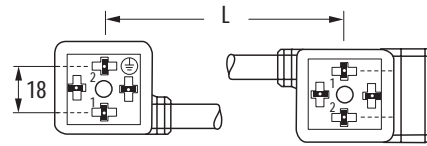
Valve plug

1	Form	No.	4 1 5 0 1	4 1 5 2 1	4 1 5 4 1
	Suppression		4-pole, 24 V AC/DC L = 100 mm	4-pole, 24 V AC/DC L = 150 mm	4-pole, 24 V AC/DC L = 200 mm

Circuit diagram



Contact layout



2	Cable type	Jacket color			Jacket color			Jacket color		
	Wire diameter 0.75 mm ²	yellow	gray	black	yellow	gray	black	yellow	gray	black
	PVC	016	216	616	016	216	616	016	216	616
	PUR/PVC	026	226	626	026	226	626	026	226	626
	PUR (UL/CSA-listed)	036	236	636	036	236	636	036	236	636

Your article no.

The composition of your article number is explained on page 1.1.2



1 Form

2 Cable type

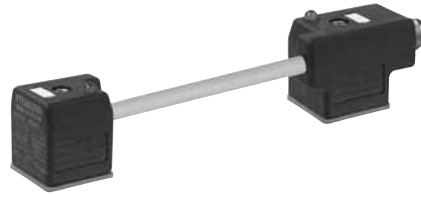
Notes

Accessories and technical data in chapter 1.10.
Further cable lengths on request.

Valve plug

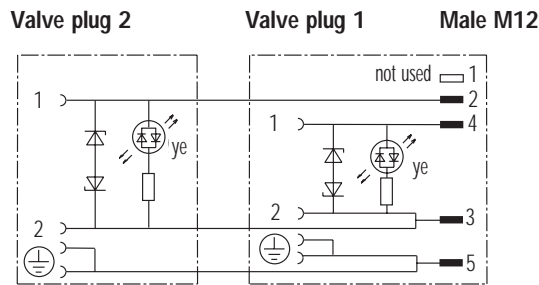
Double valve plug
with Male M12
Connector at the rear

Form A (18 mm)

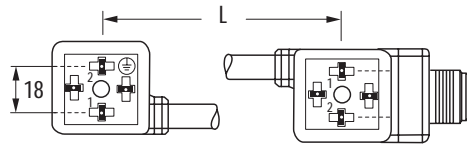


1	Form	No.	4 1 5 6 1	4 1 5 8 1	4 1 6 0 1
	Suppression		4-pole, 24 V AC/DC L = 100 mm	4-pole, 24 V AC/DC L = 150 mm	4-pole, 24 V AC/DC L = 200 mm

Circuit diagram



Contact layout



2	Cable type	Jacket color			Jacket color			Jacket color		
	Wire diameter 0.75 mm ²	yellow	gray	black	yellow	gray	black	yellow	gray	black
	PVC	016	216	616	016	216	616	016	216	616
	PUR/PVC	026	226	626	026	226	626	026	226	626
	PUR (UL/CSA-listed)	036	236	636	036	236	636	036	236	636

Your article no.

The composition
of your article number
is explained
on page 1.1.2



1 Form

2 Cable type

Notes

Accessories and technical data in chapter 1.10.
Further cable lengths on request.

Valve plug

Double valve plug
with pre-wired cable

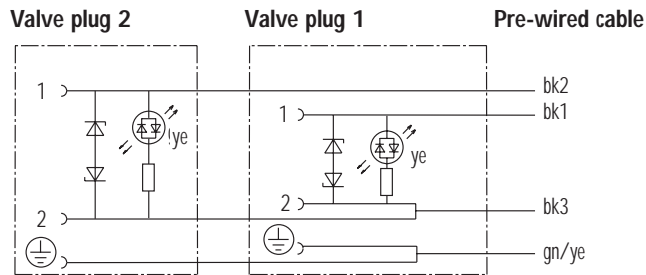
Form B (10 mm)



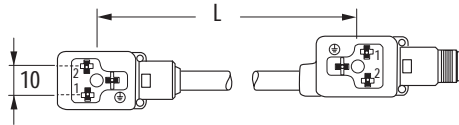
1	Form	No.	58201	58221	58241
---	------	-----	-------	-------	-------

Suppression	3-pole, 24 V AC/DC Version L = 100 mm	3-pole, 24 V AC/DC Version L = 150 mm	3-pole, 24 V AC/DC Version L = 200 mm
-------------	--	--	--

Circuit diagram



Contact layout



Jacket color for pre-wired cable = Jacket color for connection cable

2	Cable type	Jacket color			Jacket color			Jacket color		
	Wire diameter 0.75 mm ²	yellow	gray	black	yellow	gray	black	yellow	gray	black
	PVC	017	217	617	017	217	617	017	217	617
	PUR/PVC	027	227	627	027	227	627	027	227	627
	PUR (UL/CSA-listed)	037	237	637	037	237	637	037	237	637

3	Cable length	
	1.5 m	0150
	3.0 m	0300
	5.0 m	0500
	7.5 m	0750
	10.0 m	1000

Your article no.

The composition of your article number is explained on page 1.1.2



1	Form	2	Cable type	3	Cable length
---	------	---	------------	---	--------------

Notes

Accessories and technical data in chapter 1.10.
Further cable lengths on request.

Valve plug

Double valve plug
Male M12
connector top entry

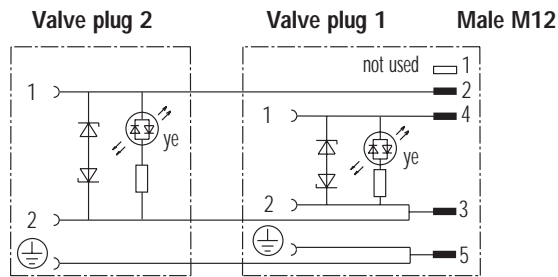
Form B (10 mm)



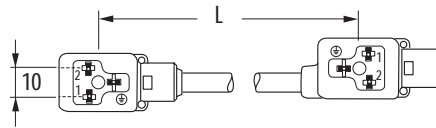
Valve plug

1	Form	No.	4 1 6 2 1	4 1 6 4 1	4 1 6 6 1
	Suppression		3-pole, 24 V AC/DC L = 100 mm	3-pole, 24 V AC/DC L = 150 mm	3-pole, 24 V AC/DC L = 200 mm

Circuit diagram



Contact layout



2	Cable type	Jacket color			Jacket color			Jacket color		
	Wire diameter 0.75 mm ²	yellow	gray	black	yellow	gray	black	yellow	gray	black
	PVC	016	216	616	016	216	616	016	216	616
	PUR/PVC	026	226	626	026	226	626	026	226	626
	PUR (UL/CSA-listed)	036	236	636	036	236	636	036	236	636

Your article no.

The composition of your article number is explained on page 1.1.2



1 Form

2 Cable type

Notes

Accessories and technical data in chapter 1.10.
Further cable lengths on request.

Valve plug

Double valve plug
Male M12
connector at the rear

Form B (10 mm)



1	Form	No.	4 1 6 8 1			4 1 7 0 1			4 1 7 2 1		
	Suppression	3-pole, 24 V AC/DC L = 100 mm			3-pole, 24 V AC/DC L = 150 mm			3-pole, 24 V AC/DC L = 200 mm			
	Circuit diagram	<div style="display: flex; justify-content: space-around;"> <div style="text-align: center;"> <p>Valve plug 2</p> </div> <div style="text-align: center;"> <p>Valve plug 1</p> </div> <div style="text-align: center;"> <p>Male M12</p> </div> </div>									
Contact layout											
2	Cable type	Jacket color			Jacket color			Jacket color			
	Wire diameter 0.75 mm ²	yellow	gray	black	yellow	gray	black	yellow	gray	black	
	PVC	016	216	616	016	216	616	016	216	616	
	PUR/PVC	026	226	626	026	226	626	026	226	626	
	PUR (UL/CSA-listed)	036	236	636	036	236	636	036	236	636	
Your article no.											
The composition of your article number is explained on page 1.1.2	<div style="display: flex; justify-content: space-around; align-items: center;"> <div style="border: 1px solid black; padding: 5px; text-align: center;"> 7 0 0 0 Murrelektronik Standard </div> <div style="font-size: 2em;">-</div> <div style="border: 1px solid black; padding: 5px; text-align: center; width: 100px; height: 30px;"> - - - - </div> <div style="font-size: 2em;">-</div> <div style="border: 1px solid black; padding: 5px; text-align: center; width: 100px; height: 30px;"> - - - - </div> <div style="border: 1px solid black; padding: 5px; text-align: center;"> 0 0 0 0 </div> </div>										
	1 Form					2 Cable type					
Notes	Accessories and technical data in chapter 1.10. Further cable lengths on request.										

Valve plug

Valve plug

Double valve plug
with pre-wired cable

Form BI (11 mm)
Industrial standard



1	Form	No.	5 8 1 0 1	5 8 1 2 1	5 8 1 4 1					
	Suppression	3-pole, 24 V AC/DC Version L = 100 mm		3-pole, 24 V AC/DC Version L = 150 mm	3-pole, 24 V AC/DC Version L = 200 mm					
	Circuit diagram									
	Contact layout	<p>Jacket color for pre-wired cable = Jacket color for connection cable</p>								
2	Cable type	Jacket color			Jacket color			Jacket color		
	Wire diameter 0.75 mm ²	yellow	gray	black	yellow	gray	black	yellow	gray	black
	PVC	017	217	617	017	217	617	017	217	617
	PUR/PVC	027	227	627	027	227	627	027	227	627
	PUR (UL/CSA-listed)	037	237	637	037	237	637	037	237	637
3	Cable length									
	1.5 m	0150								
	3.0 m	0300								
	5.0 m	0500								
	7.5 m	0750								
	10.0 m	1000								
	Your article no.									
	The composition of your article number is explained on page 1.1.2	<p>Murrelektronik Standard</p>								
		1 Form			2 Cable type			3 Cable length		

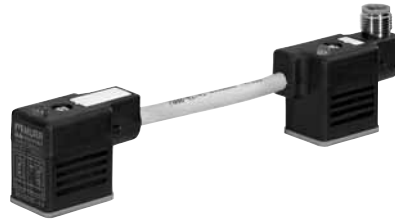
Valve plug

Notes
Accessories and technical data in chapter 1.10.
Further cable lengths on request.

Valve plug

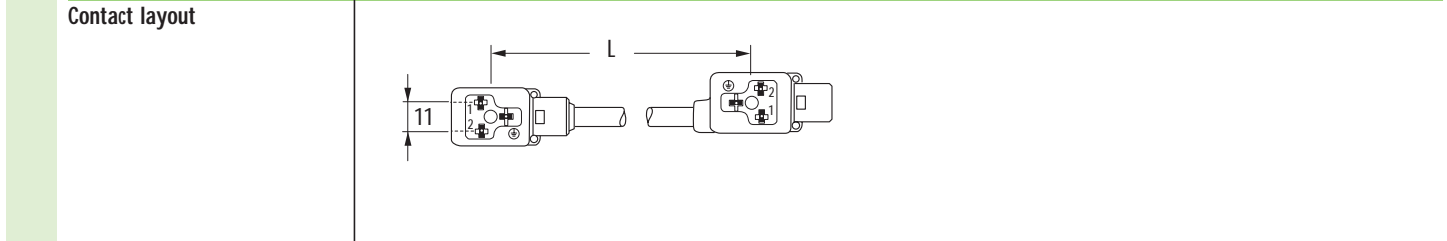
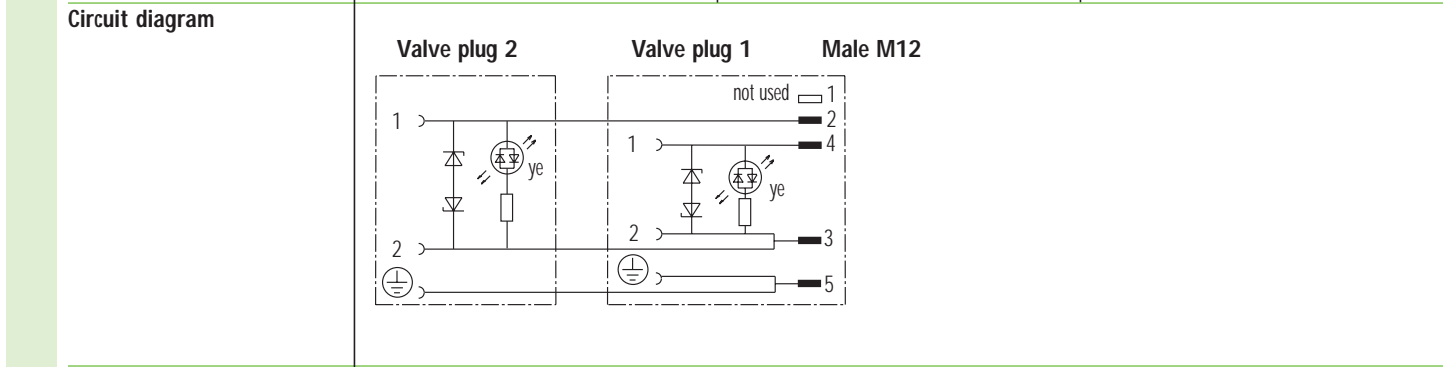
Double valve plug
Male M12
connector top entry

Form BI (11 mm)
Industrial standard



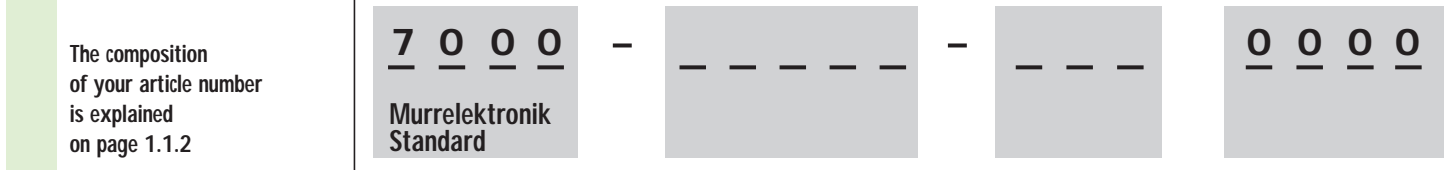
Valve plug

1	Form	No.	4 1 7 4 1	4 1 7 6 1	4 1 7 8 1
	Suppression		3-pole, 24 V AC/DC L = 100 mm	3-pole, 24 V AC/DC L = 150 mm	3-pole, 24 V AC/DC L = 200 mm



2	Cable type	Jacket color			Jacket color			Jacket color		
	Wire diameter 0.75 mm ²	yellow	gray	black	yellow	gray	black	yellow	gray	black
	PVC	016	216	616	016	216	616	016	216	616
	PUR/PVC	026	226	626	026	226	626	026	226	626
	PUR (UL/CSA-listed)	036	236	636	036	236	636	036	236	636

Your article no.



1 Form
 2 Cable type

Notes

Accessories and technical data in chapter 1.10.
Further cable lengths on request.

Valve plug

Double valve plug
Male M12
connector at the rear

Form BI (11 mm)
Industrial standard



1	Form	No.	4 1 8 0 1	4 1 8 2 1	4 1 8 4 1					
	Suppression	3-pole, 24 V AC/DC L = 100 mm		3-pole, 24 V AC/DC L = 150 mm		3-pole, 24 V AC/DC L = 200 mm				
	Circuit diagram	<div style="display: flex; justify-content: space-around;"> <div style="text-align: center;"> <p>Valve plug 2</p> </div> <div style="text-align: center;"> <p>Valve plug 1</p> </div> <div style="text-align: center;"> <p>Male M12</p> </div> </div>								
Contact layout										
2	Cable type	Jacket color			Jacket color			Jacket color		
	Wire diameter 0.75 mm ²	yellow	gray	black	yellow	gray	black	yellow	gray	black
	PVC	016	216	616	016	216	616	016	216	616
	PUR/PVC	026	226	626	026	226	626	026	226	626
	PUR (UL/CSA-listed)	036	236	636	036	236	636	036	236	636
Your article no.										
The composition of your article number is explained on page 1.1.2	<div style="display: flex; justify-content: space-around; align-items: center;"> <div style="border: 1px solid gray; padding: 5px; text-align: center;"> 7 0 0 0 Murrelektronik Standard </div> <div style="font-size: 2em;">-</div> <div style="border: 1px solid gray; padding: 5px; text-align: center; width: 100px; height: 40px;"> - - - - </div> <div style="font-size: 2em;">-</div> <div style="border: 1px solid gray; padding: 5px; text-align: center; width: 100px; height: 40px;"> - - - - </div> <div style="border: 1px solid gray; padding: 5px; text-align: center;"> 0 0 0 0 </div> </div>									
	1 Form					2 Cable type				
Notes	Accessories and technical data in chapter 1.10. Further cable lengths on request.									

Valve plug

Valve plug

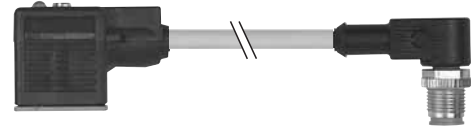
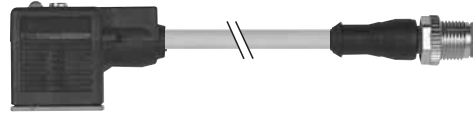
Connection cable
Valve plug - M12

Form A (18 mm)

Male M12
straight

Form A (18 mm)

Male M12
90°



Approvals:

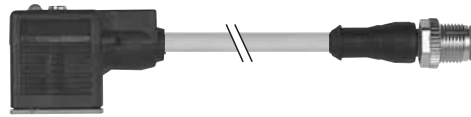
1	Form	No.	40881			40901				
	Suppression Circuit diagram	3-pole, 24 V AC/DC			3-pole, 24 V AC/DC					
	Contact layout			Contact layout						
2	Cable type		Jacket color			Jacket color				
	Wire diameter 0.75 mm ²		yellow	gray	black	yellow	gray	black		
	PVC		016	216	616	016	216	616		
	PUR/PVC		026	226	626	026	226	626		
	PUR (UL/CSA-listed)		036	236	636	036	236	636		
	Suitable for robot cable (irradiated)		056	256	656	056	256	656		
3	Cable length									
	0.3 m		0030							
	0.6 m		0060							
	1.0 m		0100							
	1.5 m		0150							
	2.0 m		0200							
Your article no.										
The composition of your article number is explained on page 1.1.2		<div style="display: flex; align-items: center; gap: 10px;"> <div style="border: 1px solid gray; padding: 5px; text-align: center;"> 7 0 0 0 Murrelektronik Standard </div> - <div style="border: 1px solid gray; width: 60px; height: 30px; background-color: #ccc;"></div> - <div style="border: 1px solid gray; width: 60px; height: 30px; background-color: #ccc;"></div> - <div style="border: 1px solid gray; width: 60px; height: 30px; background-color: #ccc;"></div> </div>								
		1	Form		2	Cable type		3	Cable length	
Notes		Accessories and technical data in chapter 1.10. Further cable lengths on request.								

Valve plug

Connection cable
Valve plug - M12
for pressure switches

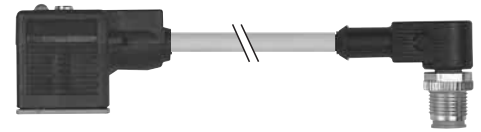
Form A (18 mm)

Male M12
straight



Form A (18 mm)

Male M12
90°



Approvals:

1 Form		No. 40921			No. 40941		
Suppression		5-pole, 24 V DC LED red/green			5-pole, 24 V DC LED red/green		
Circuit diagram							
Contact layout							
2 Cable type		Jacket color			Jacket color		
Wire diameter 0.34 mm ²		yellow	gray	black	yellow	gray	black
PVC		015	215	615	015	215	615
PUR/PVC		025	225	625	025	225	625
PUR (UL/CSA-listed)		035	235	635	035	235	635
Suitable for robot cable (irradiated)		055	255	655	055	255	655
3 Cable length							
0.3 m		0030					
0.6 m		0060					
1.0 m		0100					
1.5 m		0150					
2.0 m		0200					
Your article no.							
The composition of your article number is explained on page 1.1.2							
		1 Form		2 Cable type		3 Cable length	
Notes	Accessories and technical data in chapter 1.10. Further cable lengths on request.						

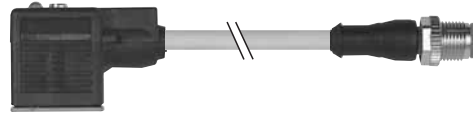
Valve plug

Valve plug

Connection cable
Valve plug - M12
for pressure switches

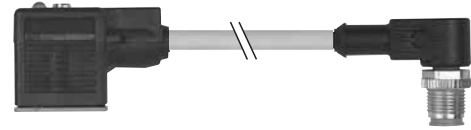
Form A (18 mm)

Male M12
straight



Form A (18 mm)

Male M12
90°



Valve plug

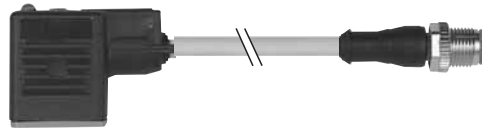
1	Form	No. 40931			40951				
	Suppression	5-pole, 24 V DC LED yellow/green			5-pole, 24 V DC LED yellow/green				
2	Circuit diagram								
	Contact layout								
3	Cable type	Jacket color			Jacket color				
	Wire diameter 0.34 mm ²	yellow	gray	black	yellow	gray	black		
	PVC	015	215	615	015	215	615		
	PUR/PVC	025	225	625	025	225	625		
	PUR (UL/CSA-listed)	035	235	635	035	235	635		
	Suitable for robot cable (irradiated)	055	255	655	055	255	655		
Cable length									
0.3 m	0030								
0.6 m	0060								
1.0 m	0100								
1.5 m	0150								
2.0 m	0200								
Your article no.									
The composition of your article number is explained on page 1.1.2	<div style="display: flex; align-items: center; gap: 10px;"> <div style="border: 1px solid gray; padding: 5px; text-align: center;"> 7 0 0 0 Murrelektronik Standard </div> - <div style="border: 1px solid gray; width: 60px; height: 30px; background-color: #ccc;"></div> - <div style="border: 1px solid gray; width: 60px; height: 30px; background-color: #ccc;"></div> - <div style="border: 1px solid gray; width: 60px; height: 30px; background-color: #ccc;"></div> </div>								
	1	Form		2	Cable type		3	Cable length	
Notes									
	Accessories and technical data in chapter 1.10. Further cable lengths on request.								

Valve plug

Connection cable
Valve plug - M12

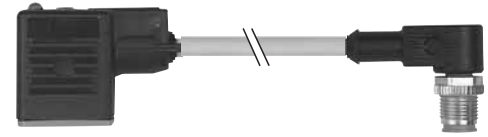
Form B (10 mm)

Male M12
straight



Form B (10 mm)

Male M12
90°



1

Form

No.

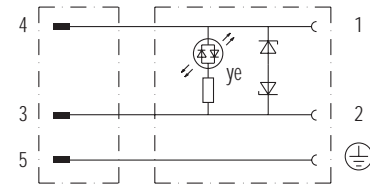
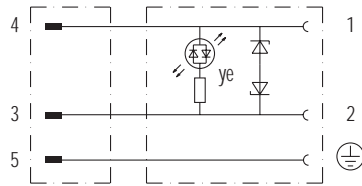
4 1 0 0 1

4 1 0 2 1

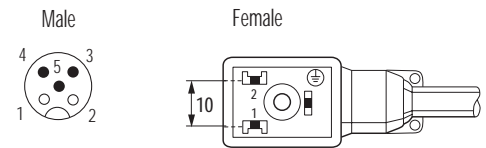
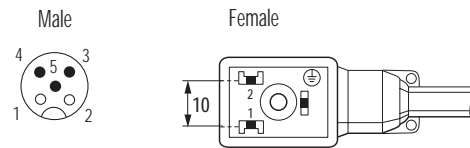
Suppression
Circuit diagram

3-pole, 24 V AC/DC

3-pole, 24 V AC/DC



Contact layout



2

Cable type

Jacket color

Jacket color

Wire diameter 0.75 mm²

yellow

gray

black

yellow

gray

black

PVC

016

216

616

016

216

616

PUR/PVC

026

226

626

026

226

626

PUR (UL/CSA-listed)

036

236

636

036

236

636

Suitable for robot cable (irradiated)

056

256

656

056

256

656

3

Cable length

0.3 m

0030

0.6 m

0060

1.0 m

0100

1.5 m

0150

2.0 m

0200

Your article no.

The composition
of your article number
is explained
on page 1.1.2

7 0 0 0

-

Murrelektronik
Standard

1

Form

2

Cable type

3

Cable length

Notes

Accessories and technical data in chapter 1.10.
Further cable lengths on request.

Valve plug

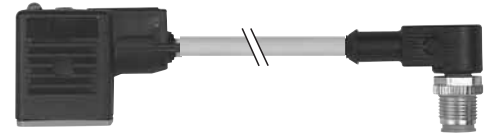
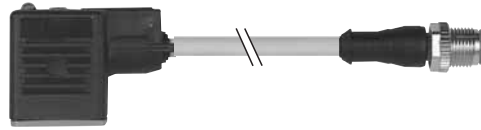
Connection cable
Valve plug - M12

Form BI (11 mm)
Industrial standard

Male M12
straight

Form BI (11 mm)
Industrial standard

Male M12
90°



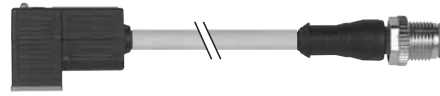
1	Form	No.	40961			40981		
	Suppression Circuit diagram	3-pole, 24 V AC/DC			3-pole, 24 V AC/DC			
	Contact layout			Contact layout				
2	Cable type	Jacket color			Jacket color			
	Wire diameter 0.75 mm ²	yellow	gray	black	yellow	gray	black	
	PVC	016	216	616	016	216	616	
	PUR/PVC	026	226	626	026	226	626	
	PUR (UL/CSA-listed)	036	236	636	036	236	636	
Suitable for robot cable (irradiated)	056	256	656	056	256	656		
3	Cable length							
	0.3 m	0030						
	0.6 m	0060						
	1.0 m	0100						
	1.5 m	0150						
	2.0 m	0200						
Your article no.								
The composition of your article number is explained on page 1.1.2								
		Murrelektronik Standard						
		1		2		3		
		Form		Cable type		Cable length		
Notes								
Accessories and technical data in chapter 1.10. Further cable lengths on request.								

Valve plug

Connection cable
Valve plug - M12

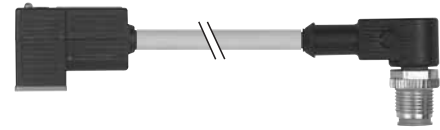
Form C (8 mm)

Male M12
straight



Form C (8 mm)

Male M12
90°

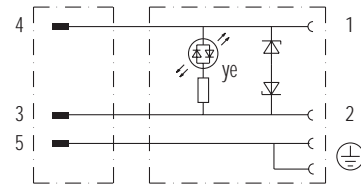
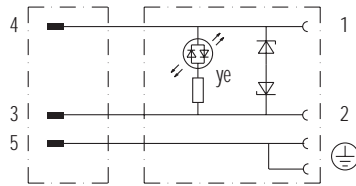


Approvals:

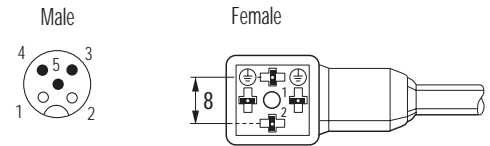
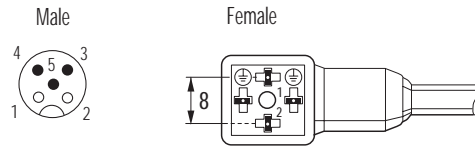
Valve plug

1	Form	No.	4 1 0 8 1	4 1 1 0 1
----------	-------------	------------	------------------	------------------

Suppression Circuit diagram	3-pole, 24 V AC/DC	3-pole, 24 V AC/DC
--	---------------------------	---------------------------



Contact layout	Male	Female	Male	Female
-----------------------	-------------	---------------	-------------	---------------



2	Cable type	Jacket color			Jacket color		
----------	-------------------	---------------------	--	--	---------------------	--	--

Wire diameter 0.75 mm ²	yellow	gray	black	yellow	gray	black
PVC	016	216	616	016	216	616
PUR/PVC	026	226	626	026	226	626
PUR (UL/CSA-listed)	036	236	636	036	236	636
Suitable for robot cable (irradiated)	056	256	656	056	256	656

3	Cable length	
----------	---------------------	--

0.3 m	0030
0.6 m	0060
1.0 m	0100
1.5 m	0150
2.0 m	0200

Your article no.	
-------------------------	--

The composition of your article number is explained on page 1.1.2

7 0 0 0 - **Murrelektronik Standard** - - - - -

1	Form	2	Cable type	3	Cable length
----------	-------------	----------	-------------------	----------	---------------------

Notes	
--------------	--

Accessories and technical data in chapter 1.10.
Further cable lengths on request.

Valve plug

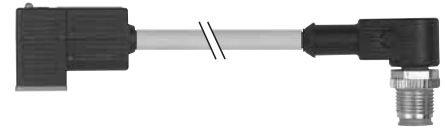
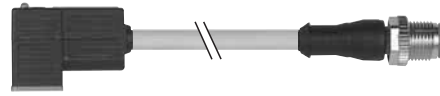
Connection cable
Valve plug - M12

Form CI (9.4 mm)
Industrial standard

Male M12
straight

Form CI (9.4 mm)
Industrial standard

Male M12
90°



Approvals:

1		Form	No.	4 1 0 4 1	4 1 0 6 1		
Suppression Circuit diagram		3-pole, 24 V AC/DC			3-pole, 24 V AC/DC		
Contact layout							
2		Cable type	Jacket color			Jacket color	
Wire diameter 0.75 mm ²		yellow	gray	black	yellow	gray	black
PVC		016	216	616	016	216	616
PUR/PVC		026	226	626	026	226	626
PUR (UL/CSA-listed)		036	236	636	036	236	636
Suitable for robot cable (irradiated)		056	256	656	056	256	656
3		Cable length					
0.3 m		0030					
0.6 m		0060					
1.0 m		0100					
1.5 m		0150					
2.0 m		0200					
Your article no.							
The composition of your article number is explained on page 1.1.2							
		1		2		3	
Notes		Accessories and technical data in chapter 1.10. Further cable lengths on request.					

Valve plug

Adapter
Valve plug - M12

Form A (18 mm)
Connector top entry



Valve plug

1	Form	No.	4 1 2 6 1	4 1 2 8 1	4 1 3 0 1	4 1 3 2 1
Suppression			3-pole without electronics	3-pole with LED	3-pole with LED and suppression	5-pole for pressure switches
Circuit diagram						
Contact layout			<p>Male</p> <p>Female</p>	<p>Male</p> <p>Female</p>	<p>Male</p> <p>Female</p>	<p>Male</p> <p>Female</p>
Technical data						
Supply voltage	24 V AC/DC					24 V DC
Supply current	max. 4 A					
Form	A to DIN 43650 (ISO 4400), contact form 18 mm (valves: 2 contacts, PE bridged; pressure switches: 3 contacts, PE opposite plug connector)					
Switch off spike	≤ 55 V					
Status indicator	–	yellow	yellow	yellow/green		
Current usage	max. 15 mA					
Connection	M12 x 1 round plug connector, 3-pole resp. 5-pole					
Protection	IP67 when plugged and screwed down					
Temperature range	-25...+85 °C					
Dimensions	H x W x D	38 x 27 x 36 mm				
Your article no.						
The composition of your article number is explained on page 1.1.2	<div style="display: flex; align-items: center; justify-content: space-around;"> <div style="border: 1px solid black; padding: 5px; text-align: center;">7 0 0 0</div> – <div style="border: 1px solid black; padding: 5px; text-align: center;">– – – – –</div> – <div style="border: 1px solid black; padding: 5px; text-align: center;">0 0 0</div> <div style="border: 1px solid black; padding: 5px; text-align: center;">0 0 0 0</div> </div> <p style="text-align: center; margin-top: 5px;">Murrelektronik Standard</p>					
1 Form						
Notes						
Accessories and technical data in chapter 1.10.						

Adapter
Valve plug - M12

Form A (18 mm)
Connection at the rear



1	Form	No.	4 1 3 8 1	4 1 4 0 1	4 1 4 2 1	4 1 4 4 1														
	Suppression		3-pole without electronics	3-pole with LED	3-pole with LED and suppression	5-pole for pressure switches														
	Circuit diagram																			
	Contact layout		<p>Male</p> <p>Female</p>	<p>Male</p> <p>Female</p>	<p>Male</p> <p>Female</p>	<p>Male</p> <p>Female</p>														
Technical data																				
	Supply voltage		24 V AC/DC			24 V DC														
	Supply current		max. 4 A																	
	Form		A to DIN 43650 (ISO 4400), contact form 18 mm (valves: 2 contacts, PE bridged; pressure switches: 3 contacts, PE opposite plug connector)																	
	Switch off spike		≤ 55 V																	
	Status indicator		-	yellow	yellow	yellow/green														
	Current usage		max. 15 mA																	
	Connection		M12 x 1 round plug connector, 3-pole resp. 5-pole																	
	Protection		IP67 when plugged and screwed down																	
	Temperature range		-25...+85 °C																	
	Dimensions	H x W x D	48 x 27 x 25 mm																	
Your article no.																				
	The composition of your article number is explained on page 1.1.2		7	0	0	0	-	-	-	-	-	-	0	0	0	0	0	0	0	0
			Murrelektronik Standard																	
			1 Form																	
Notes																				
			Accessories and technical data in chapter 1.10.																	

Valve plug

Adapter
Valve plug - M12

Form B (10 mm)
Connection at top entry



Valve plug

1	Form	No.	4 1 8 6 1	4 1 8 8 1	4 1 9 0 1
Suppression			3-pole without electronics	3-pole with LED	3-pole with LED and suppression
Circuit diagram					
Contact layout			<p>Male</p> <p>Female</p>	<p>Male</p> <p>Female</p>	<p>Male</p> <p>Female</p>
Technical data					
Supply voltage	24 V AC/DC				
Supply current	max. 4 A				
Form	B to DIN 43650 (ISO 4400), contact form 10 mm (valves: 2 contacts, PE)				
Switch off spike	≤ 55 V				
Status indicator	-		yellow	yellow	
Current usage	max. 15 mA				
Connection	M12 x 1 round plug connector, 3-pole				
Protection	IP67 when plugged and screwed down				
Temperature range	-25...+85 °C				
Dimensions	H x W x D	40 x 22 x 43 mm			
Your article no.					
The composition of your article number is explained on page 1.1.2	<div style="display: flex; align-items: center; justify-content: space-between;"> <div style="border: 1px solid black; padding: 5px; text-align: center;">7 0 0 0</div> - <div style="border: 1px solid black; padding: 5px; text-align: center;">- - - - -</div> - <div style="border: 1px solid black; padding: 5px; text-align: center;">0 0 0</div> <div style="border: 1px solid black; padding: 5px; text-align: center;">0 0 0 0</div> </div> <p style="margin-top: 5px;">Murrelektronik Standard</p>				
1 Form					
Notes					
Accessories and technical data in chapter 1.10.					

Adapter
Valve plug - M12

Form B (10 mm)
Connection at the rear



1	Form	No.	4 1 9 2 1	4 1 9 4 1	4 1 9 6 1
	Suppression		3-pole without electronics	3-pole with LED	3-pole with LED and suppression
	Circuit diagram				
	Contact layout		<p>Male</p> <p>Female</p>	<p>Male</p> <p>Female</p>	<p>Male</p> <p>Female</p>
Technical data					
	Supply voltage		24 V AC/DC		
	Supply current		max. 4 A		
	Form		B to DIN 43650 (ISO 4400), contact form 10 mm (valves: 2 contacts, PE)		
	Switch off spike		≤ 55 V		
	Status indicator		-	yellow	yellow
	Current usage		max. 15 mA		
	Connection		M12 x 1 round plug connector, 3-pole		
	Protection		IP67 when plugged and screwed down		
	Temperature range		-25...+85 °C		
	Dimensions	H x W x D	31 x 22 x 52 mm		
Your article no.					
	The composition of your article number is explained on page 1.1.2				
			1 Form		
Notes					
			Accessories and technical data in chapter 1.10.		

Adapter
Valve plug - M12

Form BI (11 mm) Industrial standard
Connector top entry



Valve plug

1	Form	No.	4 1 9 8 1	4 2 0 0 1	4 2 0 2 1	
Suppression			3-pole without electronics	3-pole with LED	3-pole with LED and suppression	
Circuit diagram						
Contact layout						
Technical data						
Supply voltage	24 V AC/DC					
Supply current	max. 4 A					
Form	BI to DIN 43650 (ISO 4400), contact form 11 mm (valves: 2 contacts, PE)					
Switch off spike	≤ 55 V					
Status indicator	-		yellow		yellow	
Current usage	max. 15 mA					
Connection	M12 x 1 round plug connector, 3-pole					
Protection	IP67 when plugged and screwed down					
Temperature range	-25...+85 °C					
Dimensions	H x W x D	40 x 22 x 43 mm				
Your article no.						
The composition of your article number is explained on page 1.1.2	7 0 0 0		-	- - - - -		-
	Murrelektronik Standard			0 0 0		0 0 0 0
1 Form						
Notes						
Accessories and technical data in chapter 1.10.						

Adapter
Valve plug - M12

Form BI (11 mm) Industrial standard
Connection at the rear



1	Form	No.	4 2 0 4 1	4 2 0 6 1	4 2 0 8 1															
	Suppression		3-pole without electronics	3-pole with LED	3-pole with LED and suppression															
	Circuit diagram																			
	Contact layout		<p>Male</p> <p>Female</p>	<p>Male</p> <p>Female</p>	<p>Male</p> <p>Female</p>															
Technical data																				
	Supply voltage		24 V AC/DC																	
	Supply current		max. 4 A																	
	Form		A to DIN 43650 (ISO 4400), contact form 18 mm (valves: 2 contacts, PE)																	
	Switch off spike		≤ 55 V																	
	Status indicator		-	yellow	yellow															
	Current usage		max. 15 mA																	
	Connection		M12 x 1 round plug connector, 3-pole resp. 5-pole used (males)																	
	Protection		IP67 when plugged and screwed down																	
	Temperature range		-25...+85 °C																	
	Dimensions	H x W x D	48 x 27 x 25 mm																	
Your article no.																				
	The composition of your article number is explained on page 1.1.2		7	0	0	0	-	-	-	-	-	-	-	0	0	0	0	0	0	0
			Murrelektronik Standard																	
			1 Form																	
Notes																				
			Accessories and technical data in chapter 1.10.																	